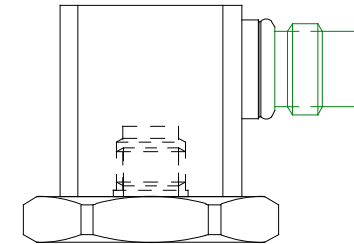
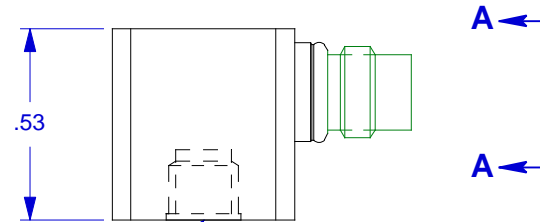


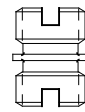
CONNECTOR MATES WITH
DYTRAN CABLE 6430AXX



ALTERNATIVE MOUNTING
METHOD USING ADHESIVE
MOUNTING BASE MODEL 6213.



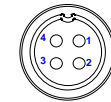
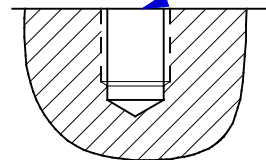
MOUNTING SURFACE
10-32 MOUNTING
HOLE X .150 DEEP



MODEL 6200 MOUNTING STUD,
PROVIDED

10-32 THREAD, TYP (REF)

SELECT SURFACE FLAT TO .001 TIR
MOUNTING HOLE PREPARATION
DRILL #21 (.159) DIA. X .250 DEEP
BOTTOM TAP 10-32 UNF-2B X .200
MIN. DEPTH PERF. THD.



VIEW A-A LOOKING
INTO CONNECTOR

PINOUT
PIN #1 SIG/PWR AXIS 1 (X)
PIN #2 SIG/PWR AXIS 2 (Y)
PIN #3 SIG/PWR AXIS 3 (Z)
PIN #4 GND RETURN,
COMMON

- 4 WEIGHT: 7.5 GRAMS.
- 3 XX=LENGTH IN FEET.
- 2. + SIGNS INDICATE SENSE AND DIRECTION OF ACCELERATION FOR POSITIVE OUTPUT.
- 1. HOUSING MATERIAL: TITANIUM ALLOY

EXCEPT AS OTHERWISE NOTED	
ALL DIMENSIONS IN INCHES TOLERANCE: .XXX = ± .005 .XX = ± .01	
SURFACE FINISH EXCEPT AS NOTED	✓
BREAK EDGES TO DEBURR RADIUS OR CHAMFER	
△ THESE DIAS ⊙ TO	T.I.R.
FILLETS -	MAX RAD.

DYTRAN INSTRUMENTS, INC.		CHATSWORTH, CA.	
SCALE 2X	REV -	DATE -	ECN -
DATE 8/7/00	PART NO. MODEL 3053B2		
DRAWN N.C.	CHECKED R.A.	MAT'L	
APPROVED	NEXT ASSEMBLY	USED ON	3053B2
TITLE OUTLINE/INSTALLATION DRAWING, MODEL 3053B2		DWG NO. 127-3053B2	
SHEET 1 OF 1			

MODEL NUMBER 3053B2	PERFORMANCE SPECIFICATION	DOC NO. PS3053B2
	TRIAxIAL ACCELEROMETER, IEPE	REV A, ECN 12088, 07/10/15



- 10-32 TAPPED HOLE
- HERMETICALLY SEALED
- INTERNALLY CASE GROUND ISOLATED

PHYSICAL

Weight
Mounting Provision [1]
Connector [2]
Material

ENGLISH		SI	
0.26	oz	7.5	grams
10-32 Tapped hole		10-32 Tapped hole	
4-Pin		4-Pin	
Titanium Alloy		Titanium Alloy	

PERFORMANCE

Sensitivity, -10/+15% [3]
Range F.S. (each axis)
Frequency Response, ± 10%
Resonant Frequency
Equivalent Electrical Noise Floor
Linearity [4]
Transverse Sensitivity, Max.
Signal Polarity

10	mV/g	1.02	mV/ m/s ²
± 500	g	± 4900	m/s ²
2 to 5000	Hz	2 to 5000	Hz
>30	kHz	>30	kHz
<0.007	g rms	<0.07	m/s ² rms
± 1%	%F.S	± 1%	%F.S
5%		5%	
Positive for motion in direction of arrows on housing			

ENVIRONMENTAL

Maximum Vibration
Maximum Shock
Temperature Range
Seal
Coefficient Of Thermal Sensitivity

± 600	g	± 5880	m/s ² pk
± 5000	gpk	± 49000	m/s ² pk
-60 to +250	°F	-51 to 121	°C
Hermetic		Hermetic	
0.03	%/°F	0.054	%/°C

ELECTRICAL

Supply Current [5]
Compliance Voltage Range
Output Impedance Typ.
Bias Voltage
Discharge Time Constant
Ground Isolation

2 to 20	mA	2 to 20	mA
+18 to +30	V	+18 to +30	V
100	Ω	100	Ω
+7 to +9	VDC	+7 to +9	VDC
0.3 to 1.0	sec	0.3 to 1.0	sec
>10	MΩ	>10	MΩ

This family also includes:

Model	Sensitivity (mV/g)	Range (Gpeak)	Resolution (Grms)	Oper. Temp(°F)	TC (sec)

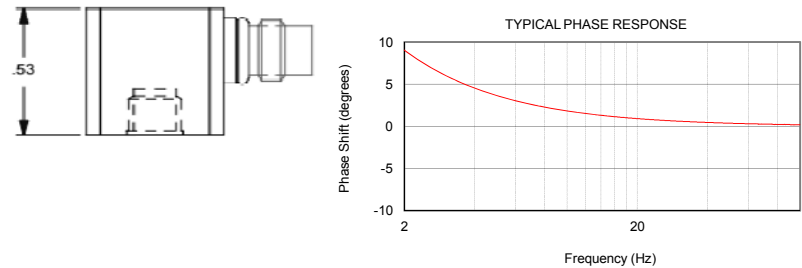
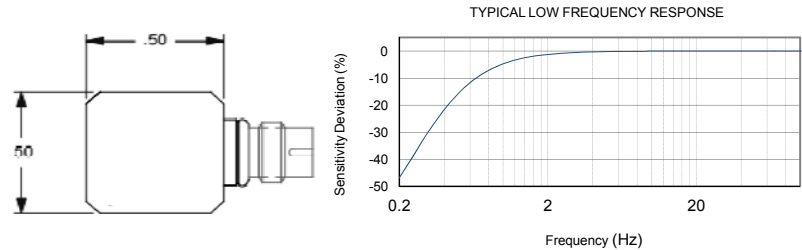
Refer to the performance specifications of the products in this family for detailed description.

Supplied Accessories

- 1) Accredited calibration certificate (ISO 17025)
- 2) Model 6200 mounting stud 10 - 32 UNF - 2A.

Notes:

- [1] Case ground isolation is achieved by internal means.
- [2] Connector mates with Dytran cable assy. Model 6430AXX. (XX = length in feet)
- [3] Reference sensitivity measured at 100 Hz, 1 G RMS per ISA RP 37.2
- [4] Linearity is % of specified full scale (or any lesser full scale range), zero-based best fit straight line method.
- [5] Do not apply power to this device without current limiting, 20mA max, to do so will destroy the integral IC amplifier



Units on the line drawing are in inches, units in brackets are in millimeters. Refer to 127-3053B2 for more information.



21592 Marilla Street, Chatsworth, California 91311 Phone: 818.700.7818 Fax:818.700.7880
www.dytran.com For permission to reprint this content, please contact info@dytran.com