

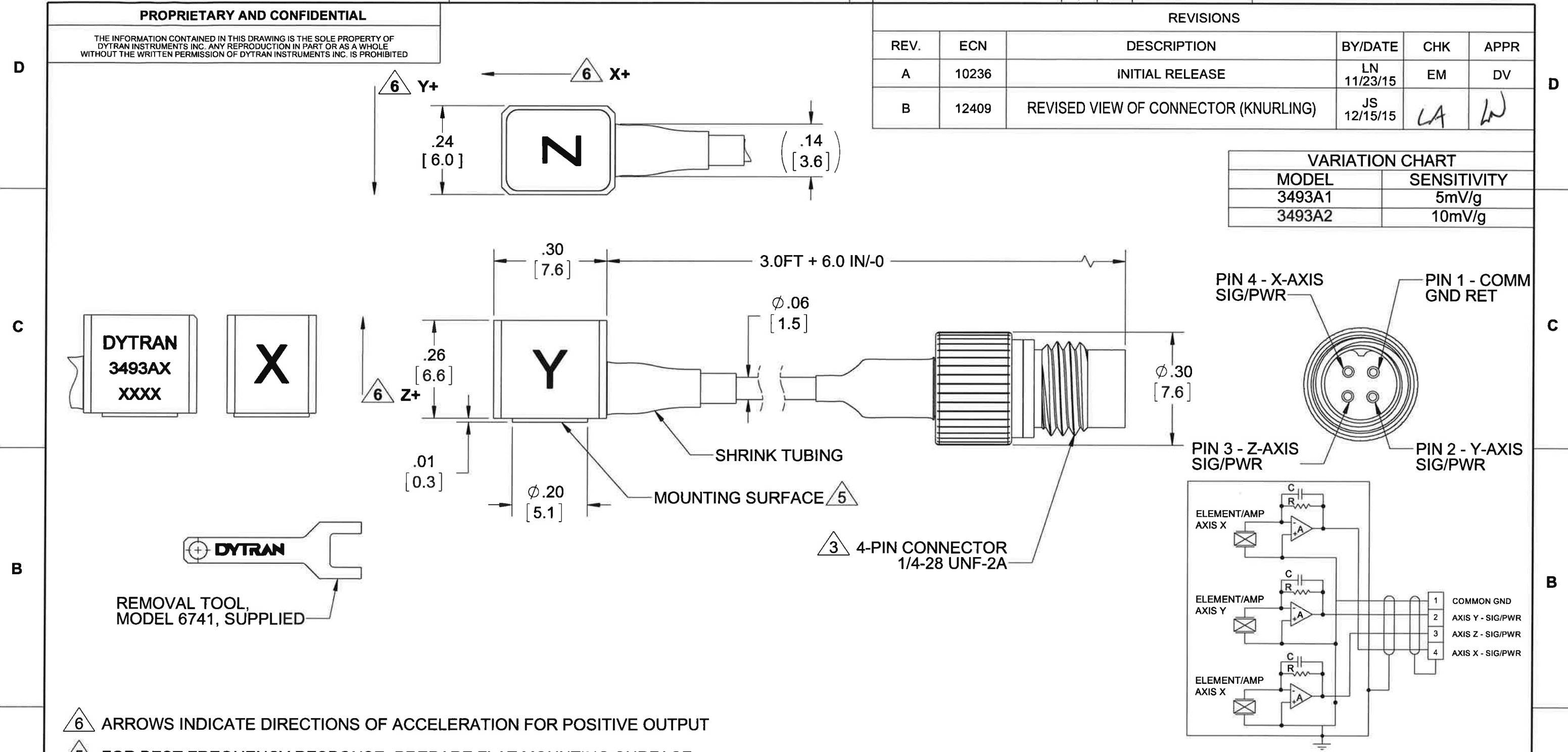
PROPRIETARY AND CONFIDENTIAL

THE INFORMATION CONTAINED IN THIS DRAWING IS THE SOLE PROPERTY OF DYTRAN INSTRUMENTS INC. ANY REPRODUCTION IN PART OR AS A WHOLE WITHOUT THE WRITTEN PERMISSION OF DYTRAN INSTRUMENTS INC. IS PROHIBITED

REVISIONS

REV.	ECN	DESCRIPTION	BY/DATE	CHK	APPR
A	10236	INITIAL RELEASE	LN 11/23/15	EM	DV
B	12409	REVISED VIEW OF CONNECTOR (KNURLING)	JS 12/15/15	LA	W

VARIATION CHART	
MODEL	SENSITIVITY
3493A1	5mV/g
3493A2	10mV/g



6 ARROWS INDICATE DIRECTIONS OF ACCELERATION FOR POSITIVE OUTPUT

5 FOR BEST FREQUENCY RESPONSE, PREPARE FLAT MOUNTING SURFACE Ø.20 [5.1] MIN, FLAT TO .001 TIR. APPLY ONE DROP OF CYANOACRYLATE ADHESIVE TO MOUNT THE ACCELEROMETER.

4. MODEL 6298, PETRO MOUNTING WAX IS SUPPLIED

3 MATING CABLES ARE MODELS 6824AXX (SANTOPRENE) OR 6811AXX (TEFLON).

2. HOUSING MATERIAL: TITANIUM ALLOY.

1. WEIGHT, LESS CABLE: 0.9 GRAMS, MAX.

NOTES: UNLESS OTHERWISE SPECIFIED

UNLESS OTHERWISE SPECIFIED:
 INTERPRET DIM & TOL PER ASME Y14.5M - 1994.
 REMOVE BURRS.
 COUNTERSINK INTERNAL THDS 90° TO MAJOR DIA.
 CHAM EXT THDS 45° TO MINOR DIA.
 THD LENGTHS AND DEPTHS ARE FOR MIN FULL THDS.
 DIMENSIONS APPLY AFTER FINISHING.

DECIMALS	METRIC	ANGLES
.XX ±.03	.X ± 0.8	±1°
.XXX ±.010	.XX ±0.25	

APPROVALS: ORG LN 05/21/13, CHK EM 11/25/15, APP DV 11/25/15

ALL MACHINED SURFACES. 63/ TOTAL RUNOUT WITHIN .005. BREAK SHARP EDGES .005 TO .010. MACHINED FILLET RADII .005 TO .015. WELDING SYMBOLS PER AWS A2.4. ABBREVIATIONS PER MIL-STD-12.

DO NOT SCALE DRAWING

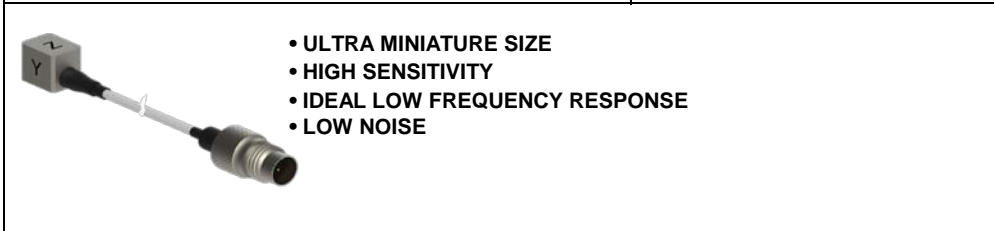
DYTRAN MASTER INSTRUMENTS, INC. Chatsworth, CA

TITLE: **OUTLINE/INSTALLATION DWG, MODEL 3493A**

SIZE **B** CAGE CODE **2W033** DWG NO **127-3493A** REV **B**

SCALE: 4:1 SHEET 1 OF 1

Model Number 3493A1	PERFORMANCE SPECIFICATIONS	DOC NO PS3493A1
Accelerometer, Triaxial, IEPE		REV A, ECN 10236, 11/20/15



- **ULTRA MINIATURE SIZE**
- **HIGH SENSITIVITY**
- **IDEAL LOW FREQUENCY RESPONSE**
- **LOW NOISE**

		ENGLISH		SI	
PHYSICAL					
Weight, Max. (Less Cable)		0.03	oz	0.9	grams
Mounting		Adhesive		Adhesive	
Integral Cable	Length	3	ft	914.4	mm
	Type	TFE		TFE	
Connector	Type	4-pin		4-pin	
Housing	Material	Titanium		Titanium	
	Isolation	Case Ground		Case Ground	
Sensing Element	Material	Ceramic		Ceramic	
	Mode	Shear		Shear	
PERFORMANCE					
Sensitivity [1], ±15%		5.0	mV/g	0.5	mV/m/s ²
Acceleration Range		1,000	Gpeak	9810	m/s ² peak
Frequency Range	±5%	1 to 5,000	Hz	1 to 5,000	Hz
	±10%	1 to 10,000	Hz	1 to 10,000	Hz
Resonance Frequency		>30	kHz	>30	kHz
Linearity [2]		±1	%	±1	%
Transverse Sensitivity		<6	%	<6	%
Bias Voltage		+11 to +13	VDC	+11 to +13	VDC
Output Impedance		100	Ω	100	Ω
Discharge Time Constant		0.2 to 1.0	seconds	0.2 to 1.0	seconds
Noise floor		0.01	Grms	0.1	m/s ² rms
Spectral Noise	1Hz	2000	μGrms/sqr(Hz)	19620	μm/s ² rms/sqr(Hz)
	10Hz	1000	μGrms/sqr(Hz)	9810	μm/s ² rms/sqr(Hz)
	100Hz	250	μGrms/sqr(Hz)	2453	μm/s ² rms/sqr(Hz)
	1000Hz	120	μGrms/sqr(Hz)	1177	μm/s ² rms/sqr(Hz)
	10000Hz	50	μGrms/sqr(Hz)	491	μm/s ² rms/sqr(Hz)
ENVIRONMENTAL					
Shock		3,000	Gpeak	29430	m/s ²
Vibration		900	Gpeak	8829	m/s ²
Operating Temperature		-55 to +225	°F	-48 to 107	°C
Seal		Epoxy		Epoxy	
Magnetic Sensitivity at 100 Gauss		0.00004	g/Gauss	0.00039	m/s ² /Gauss
Base Strain		0.15	g/με	1.47	m/s ² /με
POWER					
Compliance Voltage		+18 to +30	VDC	+18 to +30	VDC
Current Range [3]		2 to 20	mA	2 to 20	mA

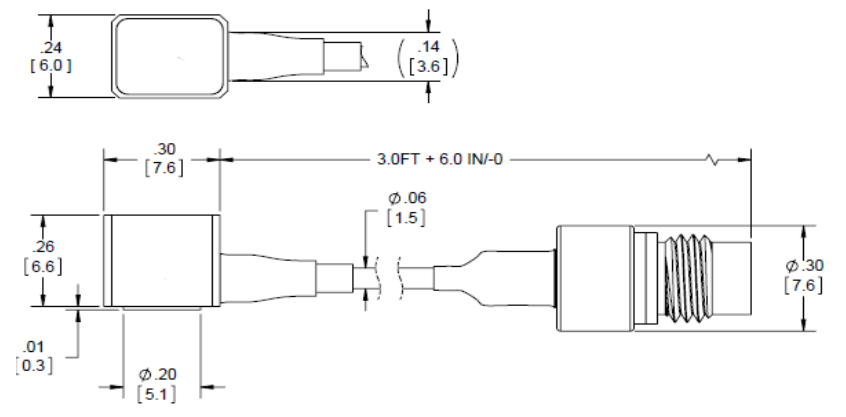
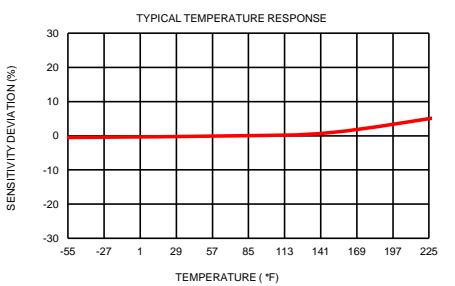
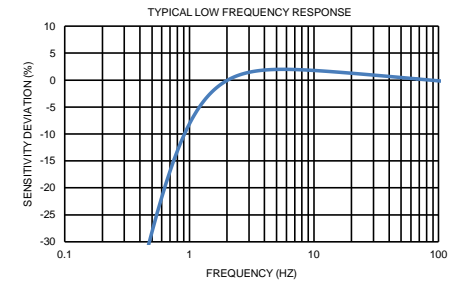
This family also includes:

Model	Sensitivity (mV/g)	Range (Gpeak)	Time Constant (Sec)	Operating Temp (°F)
3493A2	10	500	0.2 to 1.0	-55 to +225

Refer to the performance specifications of the products in this family for detailed description

- Supplied Accessories:**
- 1) Accredited calibration certificate (ISO 17025)
 - 2) Model 6298 small petro wax
 - 3) Model 6741 removal tool

- Notes:**
- [1] Measured at 100Hz, 1 Grms per ISA RP 37.2.
 - [2] Measure using zero-based straight line method, % of F.S. or any lesser range.
 - [3] Do not apply power to this system without current limiting, 20 mA MAX. To do so will destroy the IC charge amplifier.
 - [4] In the interest of constant product improvement, we reserve the right to change specifications without notice.



Units on the line drawing are in inches, units in brackets are in millimeters. Refer to 127-3493A for more information.



21592 Marilla Street, Chatsworth, California 91311 Phone: 818.700.7818 Fax: 818.700.7880 www.dytran.com
 For permission to reprint this content, please contact info@dytran.com